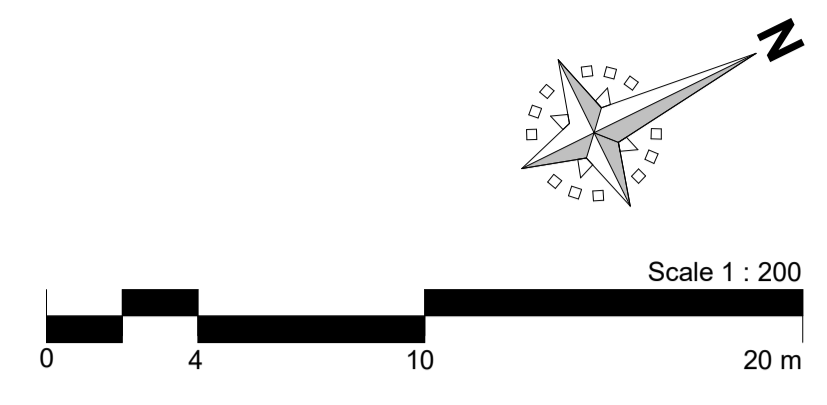




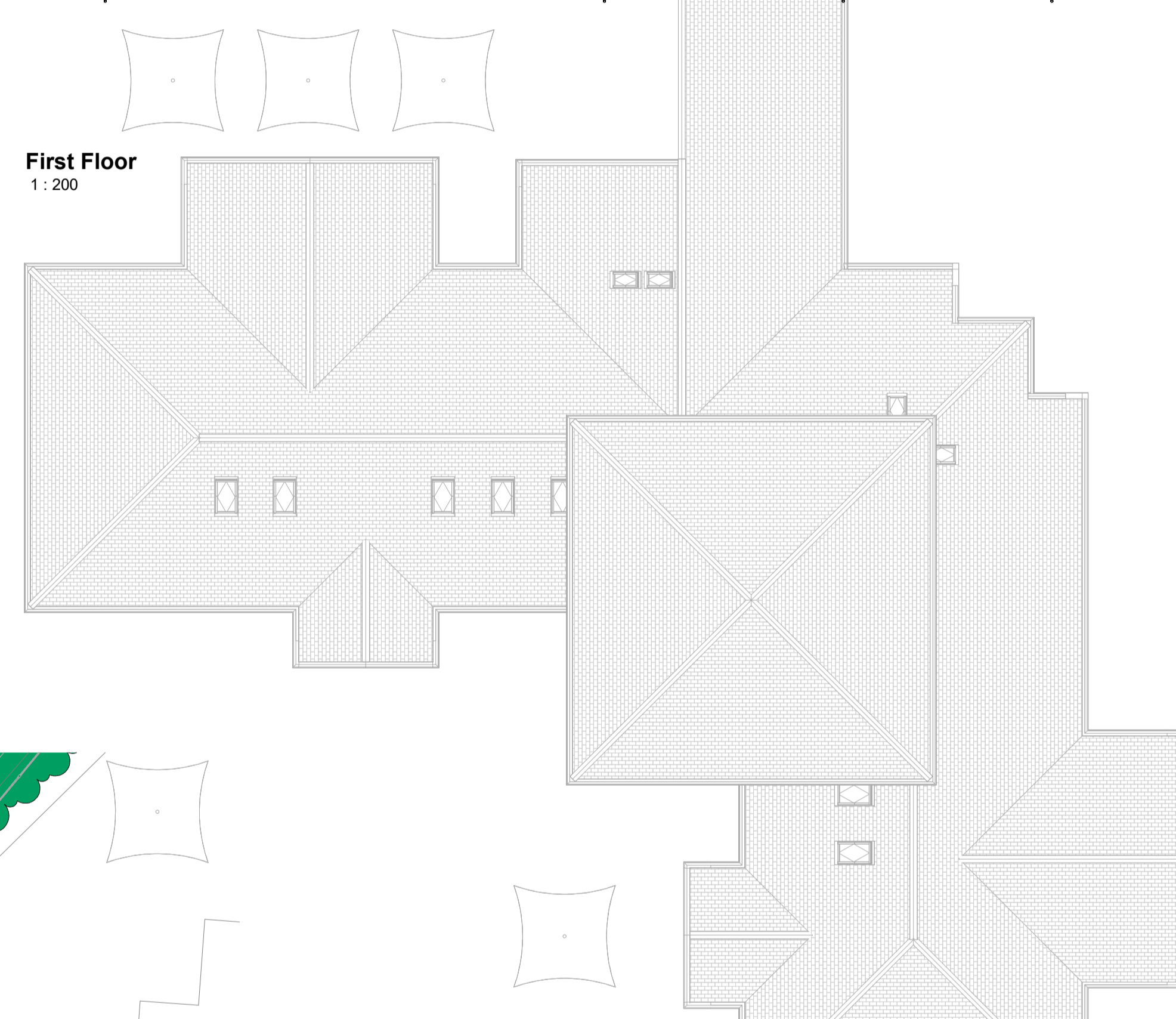
Ground Floor
1 : 200

Floor Areas GIA

Extension Ground Floor	763.47 m ²
Extension First Floor	565.54 m ²
Ground Floor Link	57.82 m ²
	1386.83 m ²
Existing Ground Floor	1007.52 m ²
	1007.52 m ²
Childcare	125.02 m ²
	125.02 m ²



First Floor
1 : 200



Departments

- Assembly & Sports Hall
- Childcare
- Circulation
- Cloaks
- Infant Class
- IT Suite / Library
- Kitchen
- Learning Resource Areas
- Lift
- Medical
- Nursery
- Plant
- Staff and Administration Areas
- Storage
- Toilets

Departments

- Assembly & Sports Hall
- Circulation
- Cloaks
- Junior Classroom
- Learning Resource Areas
- Lift
- Plant
- Storage
- Toilets

rev	date	amendment	drawn	chckd
<p>Cymunedau Dysgu Cynaliadwy Sustainable Communities for Learning</p> <p>CAERPHILLY COUNTY BOROUGH COUNCIL CERBYN ABERYSTRYTHWYLL</p> <p>CAERFFILI</p> <p>Llywodraeth Cymru Welsh Government</p>				
<p>Building Consultancy, Ty Penallta, Tredomen Park, Ystrad Mynach, Hengoed, CF82 7PG Tel: 01443 815588</p> <p>Head of Land and Property Services: Ben Winstanley MRICS</p>				
<p>drawing status Preliminary <input checked="" type="checkbox"/> Planning <input type="checkbox"/></p>				
<p>project title Llanfabon and Llancaeath Amalgamation Llanfabon Infants School, Bryncelyn Avenue, Nelson, Treharris, CF46 6HL</p>				
<p>drawing title Proposed Floor Layouts</p>				
date	scale	drawn	checked	
29/11/22	1 : 200	CY	JCH	
project no.		drawing no.		rev.
4660		P06		